



SPECTATOR HANDBOOK

OCT 15 2022

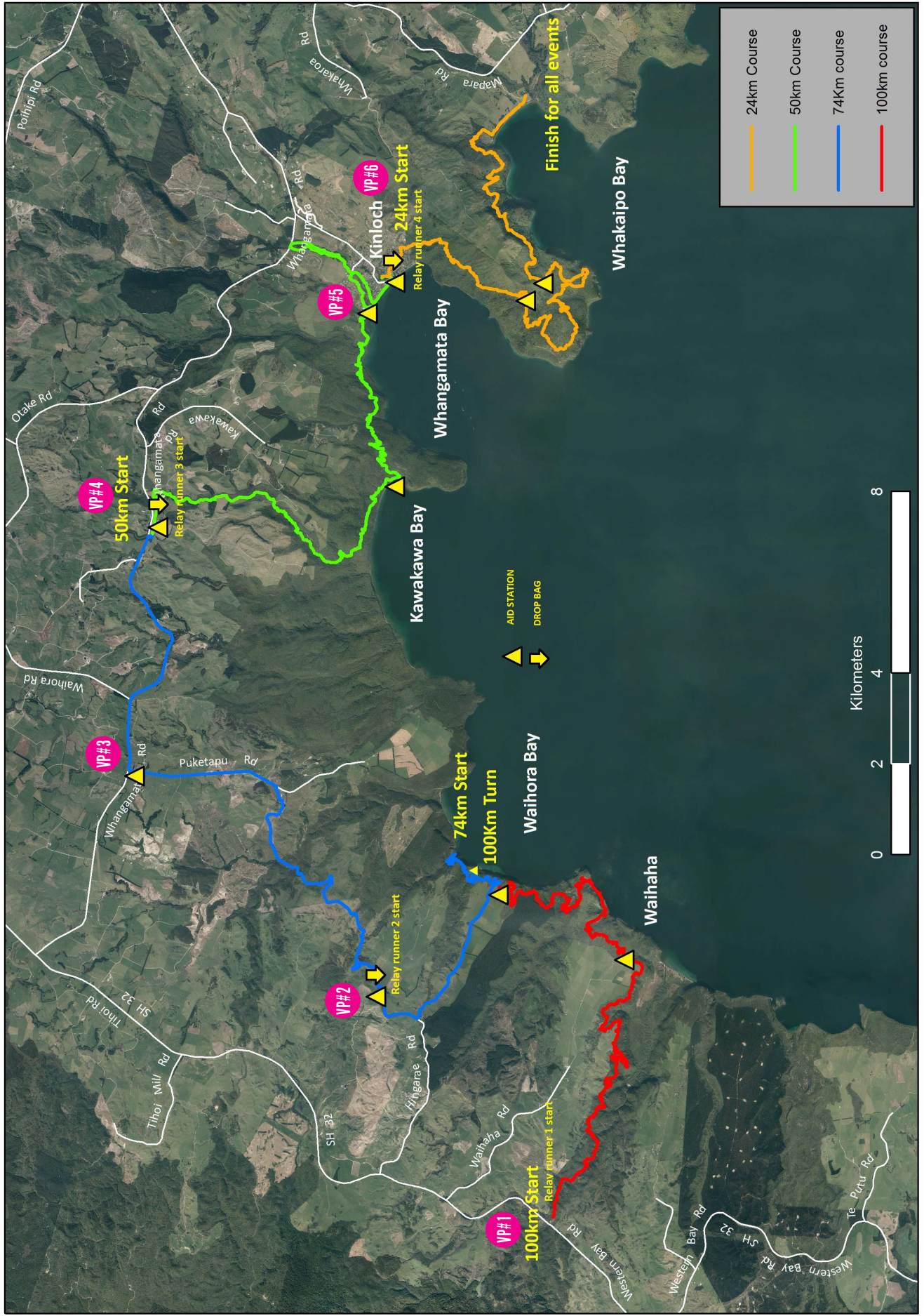
SPONSORS



Contents

1. Spectator map	3
2. Registration & pre-event briefings	4
3. Start/cut-off times & locations	5
4. Spectator viewpoints	6
5. Spectator coffee stops	10
6. Timing estimates	10
7. Prize giving	11

Spectator Map



REGISTRATION & PRE-EVENT BRIEFINGS

REGISTRATION

All Events Registration

Where: Great Lake Centre, Storey Place Taupō

When: Friday 14 October, between 4pm and 8pm

Additional 50km registration

Where: Airstrip on Whangamata Road

When: from 9.00am on Saturday 15 October

Additional 24km registration

Where: Kinloch Hall

When: from 11.00am on Saturday 15 October

COMPULSORY RACE BRIEFINGS

100km & 74km Participants

Where: The Great Lake Centre, Storey Place, Taupō

When: Friday 14 October, 6.00pm and 7.00pm

This briefing is compulsory and includes everything you need to know including the all-important health and safety and medical info.

The briefings are for competitors only, there is limited space in the briefing room, so we ask that spectators and supporters please wait outside.

50km Participants

Where: Startline, Airstrip on Whangamata Road

When: 9.45am, Saturday 15 October

24km Participants

Where: Startline, Kinloch Domain

When: 11.45am, Saturday 15 October

START / CUT-OFF TIMES & LOCATIONS

START TIMES

Event	Start Time	Location
100km Ultra Run Solo and Teams	5:30am	Waihaha Carpark SH32 – Western Bays
74km Ultra Run	7:30am	Kotukutuku Bay*
50km Ultra Run and Walk	10:00am	Airstrip – 1675 Whangamata Rd
24km Run and Walk	12:15pm	Kinloch Hall – Kinloch Domain

**Boat access only. Participants must get the 5:45am boat from the Taupō Boat Harbour.*

CUT OFF TIMES

Hingarāe Road

Event	Cut Off Time	Distance to Go
100km	11:00am	68.5km
74km	11:00am	64.9km

The Airstrip – Whangamata Rd

Event	Cut Off Time	Distance to Go
100km	2:30pm	50.9km
74km	2:30pm	46km

Kinloch Hall

Event	Cut Off Time	Distance to Go
100km	7:00pm	24km
74km	7:00pm	24km
50km	5:00pm	24km

Start of the Headland Loop (no spectator access)

Event	Cut Off Time	Distance to Go
100km	8:15pm	18km
74km	8:15pm	18km

SPECTATOR VIEWPOINTS

VIEWPOINT (VP) #1

- **100KM START**

Location

Waihaha Car Park, Western Bays Road, SH32

Parking

There is no parking at the event start location. To access the start area, you will need to park at the designated event parking at 3687 Western Bay Road. From there you will need to jump on the free shuttle bus that will take you the remaining 2km to the event start. There will be return shuttles back from the start line to the event parking area for spectators.

Safety

Please follow all reduced speed signage and drive slowly into the parking area. Please follow all parking marshal instructions.

VIEWPOINT (VP) #2

- **100KM & 74KM – AID STATION & DROPBAG LOCATION**
- **100KM RELAY RUNNER #2 CHANGEOVER POINT**

Location

521 Hingarae Road, Tihoi, 3381

Details

Situated on private farmland, this is an aid station and drop bag location for the 100km and 74km participants as well as a relay changeover point. This is also a course cut off point for the 74km and 100km participants.

Parking

Event parking at this location is at 615 Hingarae Road Tihoi. Please follow event parking signage.

Safety

When driving down Hingarae Road you should expect to see runners on the same road after 4km. Please drive slowly and give them plenty of space.

SPECTATOR VIEWPOINTS (CONT.)

VIEWPOINT (VP) #3

- **100KM & 74KM – AID STATION**

Location

Corner Puketapu Rd and Whangamata Road, Marotiri 3492

Details

This is an aid station only and not a drop bag location.

Parking

On Puketapu Road Shoulder

Safety

Please turn down Puketapu Road carefully and stick to the reduced speed limit, runners will be on this road heading for the aid station. Avoid driving too far down Puketapu Road onto oncoming runners. U turn when safe to do so and park on the left-hand side of Puketapu Road and support your runner.

VIEWPOINT (VP) #4

- **50KM START LINE**
- **100KM & 74KM – AID STATION & DROPBAG LOCATION**
- **100KM RELAY RUNNER #3 CHANGEOVER POINT**

Location

Air Strip, 1675 Whangamata Road

Details

This is an aid station, drop bag location, relay changeover point and the 50km start line. This is also a course cut off point for the 74km and 100km participants.

Parking

Drive into the driveway at 1675 Whangamata Road and follow the event parking signage onto the main airstrip paddock.

Safety

Be aware that runners will be coming into the farm and air strip using the same driveway. Please give way to runners and drive slowly when entering and exiting. Please follow all reduced speed signage on Whangamata Road.

SPECTATOR VIEWPOINTS (CONT.)

VIEWPOINT (VP) #5

- **100KM, 74KM & 50KM – AID STATION**

Location

133 Lisland Drive, Kinloch

Details

This is an aid station only.

Parking

There is plenty of street parking on Lisland Drive.

Safety

Be aware that there will be runners in the area so please take care when driving and parking.

VIEWPOINT (VP) #6

- **24KM START LINE**
- **100KM, 74KM & 50KM – AID STATION & DROP BAG LOCATION**
- **100KM RELAY RUNNER #4 CHANGE OVER POINT**

Location

Kinloch Community Hall, Kinloch Domain

Details

This is an aid station, drop bag location, relay change over point and the 24km start point. *This is also a course cut off point for the 50km, 74km and 100km participants.*

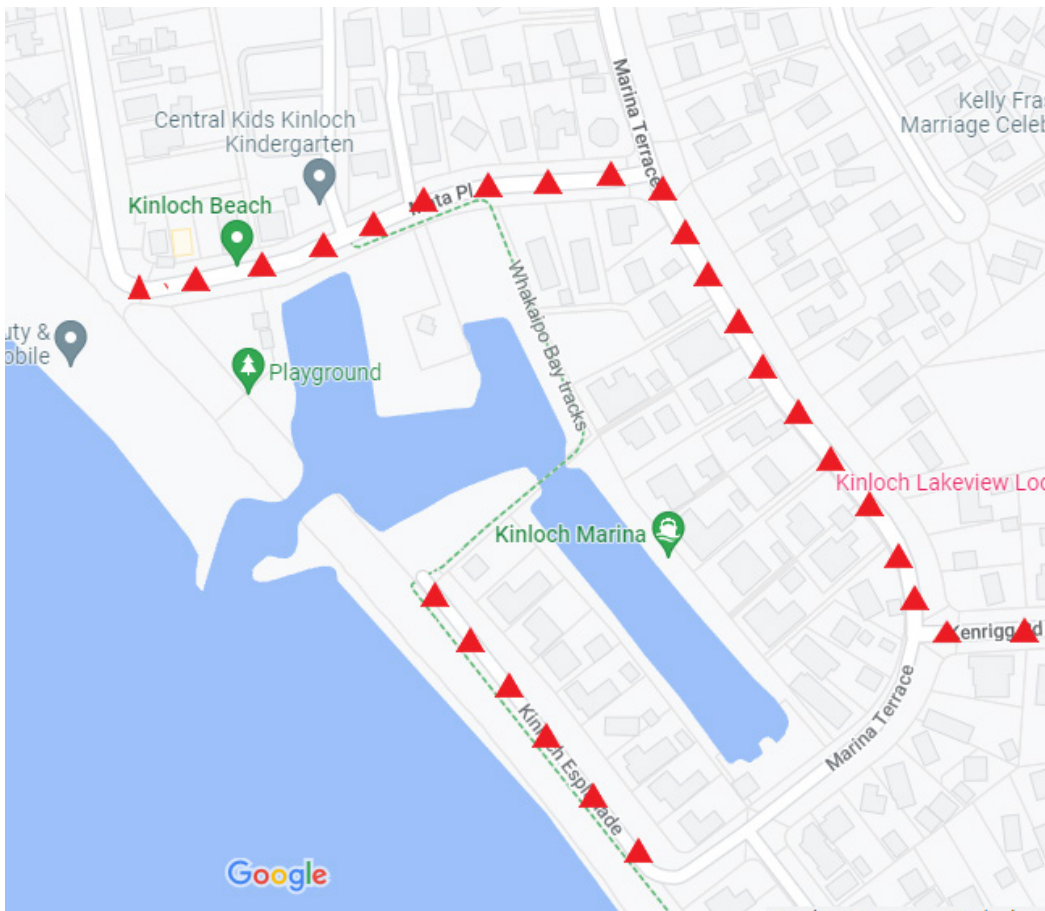
Parking

Parking will be on the streets of Kinloch, please be considerate of residents of Kinloch and do not block any driveways. Red triangles on the map on the next page indicate areas of no parking on event day..

Safety

Please avoid driving down Mata Place if possible. This area is very busy with competitors entering and exiting the aid station. Follow all reduced speed signage around Kinloch and drive carefully.

SPECTATOR VIEWPOINTS (CONT.)



Red triangles indicate no parking areas in Kinloch on event day.

FINISH LINE

Location

Whakaipo Bay campground

Details

All distances finish here.

Parking

There is plenty of parking available next to the campground.

Safety

The road into Whakaipo Bay is narrow and unpaved – about 1 km down to the finishline. Please go slow and take care on this road as it is narrow and there will be traffic both ways.

SPECTATOR COFFEE & FOOD STOPS

COFFEE CARTS

- 50km startline - Air Strip, Whangamata Road
- 24km Startline - Kinloch Domain

CAFES

Kinloch (Viewpoint #6)

- Kinloch General Store & cafe - Mata Place

Mapara Road (6kms from the finish line at Whakaipo Bay)

- L'arte Cafe - 255 Mapara Road

ATHLETE TIMING ESTIMATES

SPLITS CHART

Get your athlete's expected times for each Viewpoint and track their progress with this chart.

	Viewpoint #	Expected Time	Actual Time	Departure Time
100km only {	VP #1			
100 + 74km {	VP #2			
	VP #3			
100, 74, + 50km {	VP #4			
	VP #5			
All distances {	VP #6			

POST EVENT PRIZE GIVING

Trophies will be awarded to the top three male and female athletes in each event distance. Major spot prizes will also be given out at prizegiving.

Where: The Great Lake Centre - Storey Place, Taupō

When: 11.00am - 12.00pm Sunday 16 October